

SANITOP®

SANITOP® Silence

is used to create an additional half bathroom. This unit offers a quiet macerating pumping system that's ideal to install a toilet with a wash basin.



5 m
100 m



DOMESTIC RANGE

Recommended waste pipe diameter: 22 to 32 mm

Normal operating temperature: 35°C

Index of protection: IP44

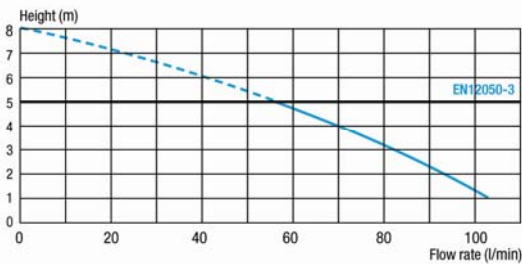
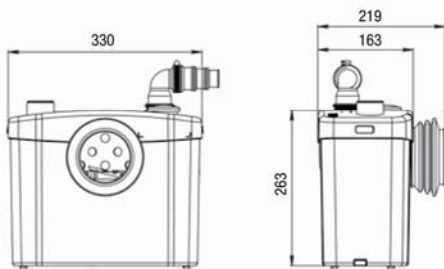
Electrical power supply: 220-240 V / 50 Hz

Motor power rating: 400 W

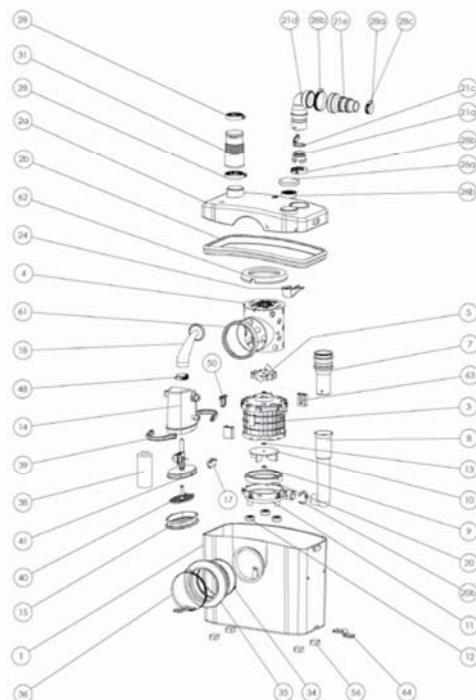
Weight: 5,8 kg

Non-return valve

Can be equipped with **SANIALARM®**



Vertical and Horizontal discharge: ↑ 5 m → 100 m



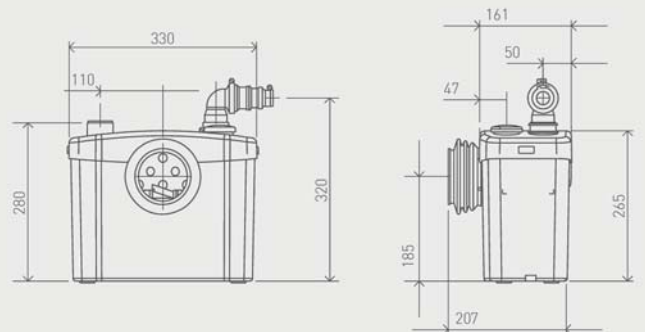
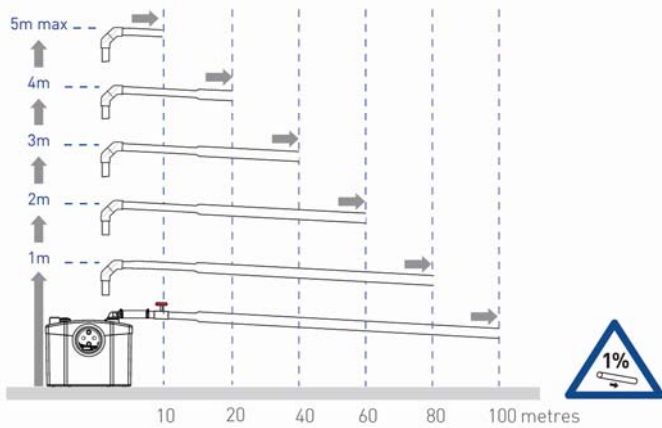
Sanitop® has a powerful macerator that makes it perfect for installing an additional WC and hand basin where access to the main sewer is impractical.

Why choose this product?

- Suitable for one WC only
- Hand basin connection
- Suitable for new installations
- Quiet technology

Vertical/horizontal performance

Increase size of horizontal run by one pipe size after 5m



Discharge Pipework

20mm

Product Weight

5.8kg

Motor Power

400 Watts

Inlet Pipework

40mm

Voltages

220-240 V/50 Hz

IP Rating

IP44

Working Waste Water Temp

35°C

Discharge height (m)

